

# iET<sup>®</sup> Inventory Center

## Agentless Inventory of your IT Assets

### Technical Specifications

#### Agentless Inventory Interfaces

- ▶ Windows APIs (RPC, WMI, remote registry)
- ▶ SSH (Linux, OS-X, etc.)
- ▶ Exchange ActiveSync (mobile devices)
- ▶ SNMP v1, v2c
- ▶ SNMP v3
- ▶ Printer: printer MIB (page count, filling level for toner, messaging)
- ▶ Router, switches: Cisco Discovery Protocol (CDP)
- ▶ All SNMP devices: host MIB, entity MIB
- ▶ Switches: bridge MIB
- ▶ Low bandwidth requirements to avoid business disruptions

## Asset Management plus the Option To Create a Configuration Management Database

Today's IT infrastructures are characterized by increased complexity and more frequent changes regarding hardware, software and licenses. With a tool like iET Inventory Center, companies gain meaningful and current data about the performance and use of their IT assets and will therefore be able to offer premium IT services as well as carry out a sustainable risk management.

## Agentless Inventory

iET Inventory Center enables the agentless discovery of complete networks from a central point. It scans physical and virtual devices including all their components such as model, processor, memory modules, drives, sound and video adapter, screens and installed USB devices. Moreover, it inventories additional hardware such as switches, routers, print servers, etc. Of course, data on all installed software packages, apps, hotfixes and the configuration of Windows systems will also be gathered. Via existing APIs, iET Inventory Center can reach even for more devices running Mac OS-X, Linux, VMware ESX, etc. with SNMP or SSH interfaces. All data is stored in a central MS SQL Server database so that you can analyze it immediately by running dynamic, freely configurable and clearly arranged reports. These may be used as documentation for audits and for controlling purposes within asset management.

## Privacy in Practice: User Account Anonymization

Using iET Inventory Center guarantees that your IT administration fulfills legal regulations. iET Inventory Center is compliant with the German Bundesdatenschutzgesetz (BDSG §4) and corresponding European laws.

Interactive user accounts are strictly anonymized in iET Inventory Center. This makes it impossible to trace back personal data and to relate it to any real person.

## Inventory of all Assets

Within minutes and via TCP/IP, iET Inventory Center gathers data from all Windows PCs, SSH- and SNMP-enabled devices connected to the network. This includes print servers, switches, routers as well as Mac and Linux computers. The integrated scanner enables parallel ad-hoc queries and scans up to one hundred and fifty computers in one minute.

The scan range can be defined on the existing structure of the Active Directory or by limiting the IP range, and thus allows to gather data from individual sites or specific divisions as needed. The tool does not affect network or computing performance of individual computers during the scan process - users can continue to work without disruption. All information is written to a central database and stored there.

iET Inventory Center also offers the option to utilize the logon script to create an inventory of computers in the network. As soon as a user logs in, the relevant PC will be scanned automatically and included in the hardware and software inventory. A task planner can be used to control and automate scanning procedures and the transfer of information to the iET Inventory Center database.

In addition to the current inventory state, all previous changes are maintained in the database. This allows to query old and new values in the iET Management Center, all marked with a time stamp. It also enables key-date evaluations.

# iET<sup>®</sup> Inventory Center

## Agentless Inventory of your IT Assets

### Inventory via MS Exchange

iET Inventory Center provides an overview of the entire Microsoft Exchange organization such as “Where are which servers with which editions and roles located?”. It also discovers mailbox-database details and you can inventory mobile devices such as smartphones or tablets that are connected to the MS Exchange Server via ActiveSync.

### Unique Asset Identification by Fingerprint Method

iET Inventory Center uses a secure method to identify and allocate assets reliably. The fingerprint method prevents duplicate entries that can occur when e.g. a computer is renamed, motherboards or network cards have been exchanged.

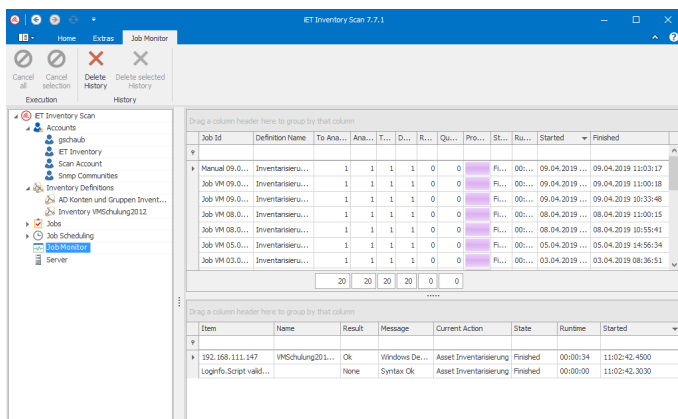
### Installation and User Interfaces

iET Inventory Center requires only one central installation to discover and evaluate all PCs that can be reached via network ping. The tool provides a convenient navigation with iET Management Center that is based on the Windows client. With the agentless approach of iET Inventory Center, installation and execution of software agents on client PCs are not required.

Data gathered by iET Inventory Center can be evaluated using iET Management Center or the web client. Evaluations can be defined flexibly, e.g. as Excel files, to be further used for printing or exports.

### Integration of Active Directory (AD)

Scan ranges can also be defined based on existing AD structures. All modifications made within the AD such as new subnets, sites or organizational units (OUs) will automatically be included during the next scan. This reduces the administrative effort of entering and updating scan ranges in the scan module GUI.



Using the graphical interface of iET Inventory Scan, you can easily configure and save your scan definitions.

### Characteristics

- ▶ User anonymization: User information can be anonymized when gathered (according to BDSG §4)
- ▶ User information from Active Directory (including recursive group affiliation)
- ▶ Device details from Active Directory
- ▶ Checks via iET Management Center or web interface
- ▶ GUI scan via workflow engine and scan service
- ▶ Scan based on organizational units from Active Directory
- ▶ Scan based on locations/subnets from Active Directory
- ▶ Scan based on defined IP ranges or lists
- ▶ Discovery of mobile devices via Exchange ActiveSync
- ▶ Agentless operation mode
- ▶ Inventory of Windows devices via WMI, remote registration, RPC, scripts
- ▶ Task planner for scan jobs
- ▶ User-defined features (dynamic or constant)
- ▶ User-defined registry queries
- ▶ User-defined WMI queries
- ▶ User-defined OID queries

# iET<sup>®</sup> Inventory Center

## Agentless Inventory of your IT Assets

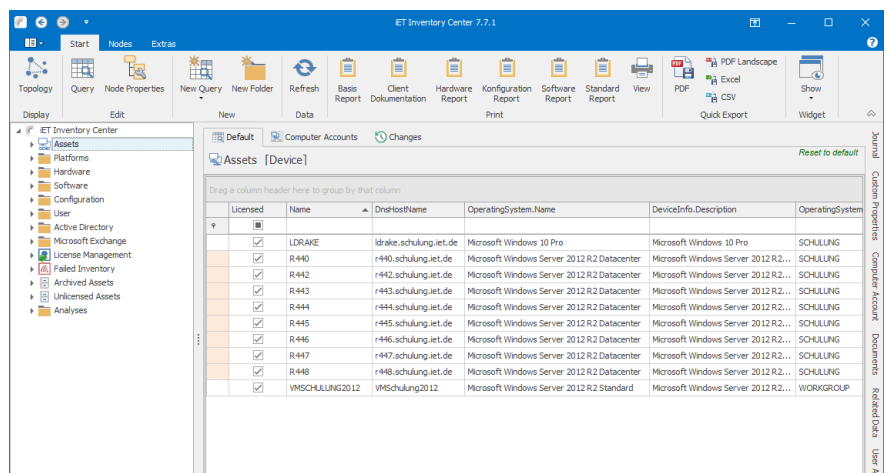
### Predefined Analysis Templates (Examples)

- ▶ Assets: computers (including CPU, hard drive, partitions) as well as IP-enabled devices
- ▶ Faulty: incorrectly scanned assets
- ▶ Domains: domains discovered in the network
- ▶ Hardware: hardware used within the Windows network as well as the number of installations
- ▶ Software: software packages used within the Windows network as well as the number of installations

### Detailed Analyses

With just a few mouse clicks, individual and clearly structured reports are generated based on the data from the central repository. These reports provide comprehensive information about all computers and devices in the network as well as configuration details. Filters in query designer can be applied to create data analyses tailored to your specific needs. Analyses of journal entries are also possible.

iET Inventory Center provides a role-based administrative approach for analysis and evaluations can be defined by applying hierarchic filters. This feature enables organizations to limit data access to specific user groups and prevent unauthorized access.



The screenshot shows the iET Inventory Center 7.7.1 interface. The main window displays a table of asset analysis results. The table has columns for 'Licensed', 'Name', 'DnsHostName', 'OperatingSystem.Name', 'DeviceInfo.Description', and 'OperatingSystem'. The data rows show various assets like 'LDRAKE', 'R440', 'R442', 'R443', 'R444', 'R445', 'R446', 'R447', 'R448', and 'VMSCHULUNG2012', each with its corresponding IP address, operating system, and description.

Licensed	Name	DnsHostName	OperatingSystem.Name	DeviceInfo.Description	OperatingSystem
<input checked="" type="checkbox"/>	LDRAKE	ldrake.schulung.iet.de	Microsoft Windows 10 Pro	Microsoft Windows 10 Pro	SCHULLUNG
<input checked="" type="checkbox"/>	R440	r440.schulung.iet.de	Microsoft Windows Server 2012 R2 Datacenter	Microsoft Windows Server 2012 R2...	SCHULLUNG
<input checked="" type="checkbox"/>	R442	r442.schulung.iet.de	Microsoft Windows Server 2012 R2 Datacenter	Microsoft Windows Server 2012 R2...	SCHULLUNG
<input checked="" type="checkbox"/>	R443	r443.schulung.iet.de	Microsoft Windows Server 2012 R2 Datacenter	Microsoft Windows Server 2012 R2...	SCHULLUNG
<input checked="" type="checkbox"/>	R444	r444.schulung.iet.de	Microsoft Windows Server 2012 R2 Datacenter	Microsoft Windows Server 2012 R2...	SCHULLUNG
<input checked="" type="checkbox"/>	R445	r445.schulung.iet.de	Microsoft Windows Server 2012 R2 Datacenter	Microsoft Windows Server 2012 R2...	SCHULLUNG
<input checked="" type="checkbox"/>	R446	r446.schulung.iet.de	Microsoft Windows Server 2012 R2 Datacenter	Microsoft Windows Server 2012 R2...	SCHULLUNG
<input checked="" type="checkbox"/>	R447	r447.schulung.iet.de	Microsoft Windows Server 2012 R2 Datacenter	Microsoft Windows Server 2012 R2...	SCHULLUNG
<input checked="" type="checkbox"/>	R448	r448.schulung.iet.de	Microsoft Windows Server 2012 R2 Datacenter	Microsoft Windows Server 2012 R2...	SCHULLUNG
<input checked="" type="checkbox"/>	VMSCHULUNG2012	VMSchulung2012	Microsoft Windows Server 2012 R2 Standard	Microsoft Windows Server 2012 R2...	WORKGROUP

Example for an asset analysis

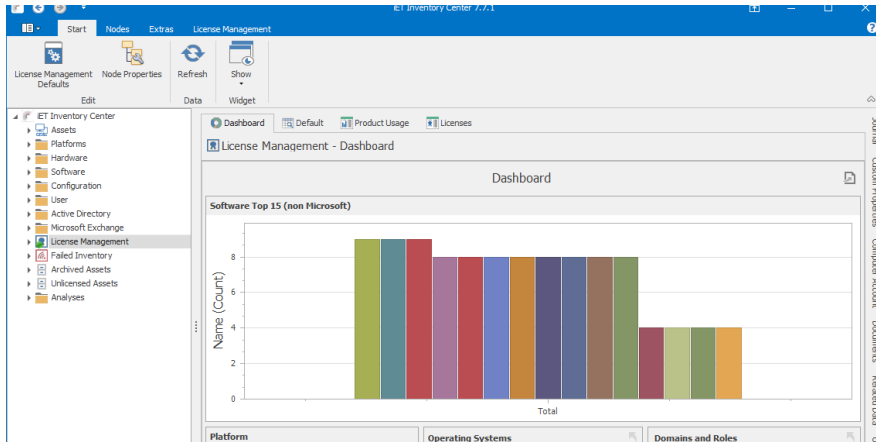
### License Management

License management is based on the existing software package inventory data. An easy-to-use assistant helps the user to convert the package into a licensed-managed product. It allows to control up- and downgrade rights, maintenance contracts, license purchase and sale, as well as several license metrics such as per user, per device, per installation, simultaneous use or rights for second usage. iET Inventory Centers license management fulfills all requirements of a software asset management (SAM). It also allows you to perfectly control and monitor the correct utilization and currentness of your software licenses by using a traffic light system. The integrated license management provides:

- ▶ License document administration
- ▶ Management of license purchases and outflows
- ▶ Grouping of software packages

# iET<sup>®</sup> Inventory Center

## Agentless Inventory of your IT Assets



In license management, you can link files such as license documents or invoices directly to a licence.

### Representable License Metrics

- ▶ Per user
- ▶ Per device
- ▶ Per installation
- ▶ Rights for second usage

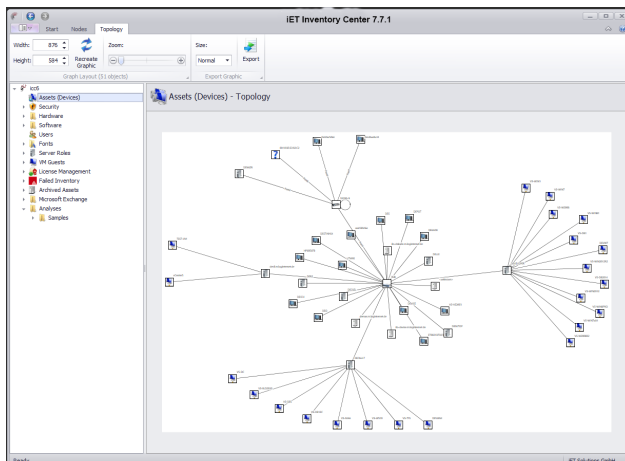
## Cost Savings due to Statistics about Software-Use

The investment in iET Inventory Center pays off quickly. With the optional agent LOGINuse for Windows, iET Inventory Center offers a function to register a timestamp of the last usage of all applications of every user on any PC. This also works for terminal servers. All gathered data is considered in iET Inventory Center's license management. By comparing installed software-packages with actually used licenses, one can identify applications that are not used and therefore redundant. This offers great potential for cost savings.

As an alternative to LOGINuse for Windows, one may also identify the last time of application use via the Windows-API. This method only considers applications opened via the start menu, desktop or explorer.

## Graphical Network Topology

iET Inventory Center provides a graphical display of the network structure. You can get a clear and detailed view of the topology with its port connections and asset dependencies between clients, servers, switches, print servers, etc. depending on the network size. This feature helps the administrator to obtain a better overview of the network environment as a whole or in parts.



Graphical network topology in iET Inventory Center

# iET<sup>®</sup> Inventory Center

## Agentless Inventory of your IT Assets

### Benefits of Integrating iET CMDB Intelligence:

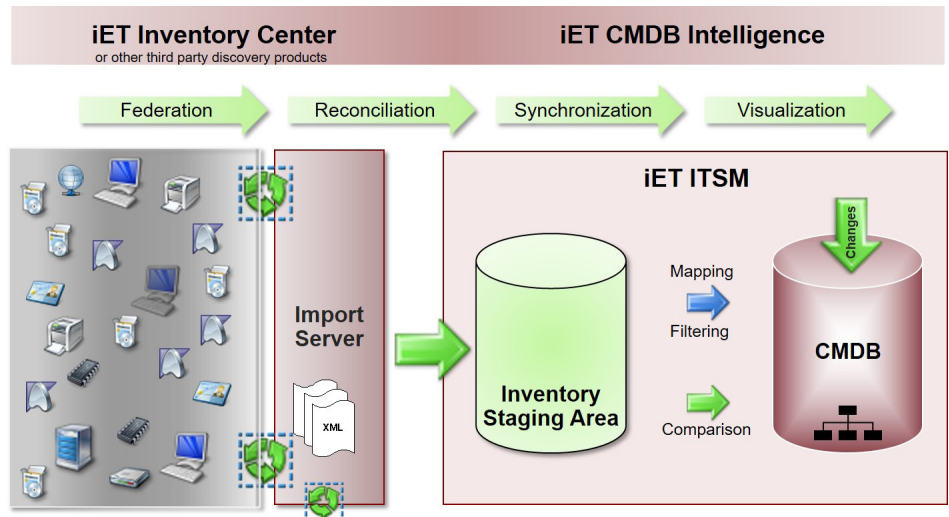
- ▶ Automated creation of hardware and software relations
- ▶ Variance comparison of the IT infrastructure
- ▶ Accurate administration of your complete IT inventory, including location, configuration, history etc.
- ▶ Immediate availability of all details on configuration items to save time spent with incident and problem management as well as change enablement
- ▶ Supports planning and control of changes
- ▶ Provides accurate data as basis for release management planning
- ▶ Central repository to distribute inventory data company-wide

## Use of Collected Data for the Creation of a Configuration Management Database

In addition to classical asset management, data gathered by iET Inventory Center can be used to create a CMDB. For this purpose, iET CMDB Intelligence has to be installed. This software solution transfers the collected and pre-filtered information from the asset database into its own database. Filtering allows you to exclude unwanted data from the import, e.g. information that is only required for asset management functions.

iET CMDB Intelligence maintains the actual data separate from the existing CMDB, automatically executes a comparison, and shows differences between actual IT infrastructure and CMDB in a comprehensive variance comparison.

For further information regarding iET CMDB Intelligence, please refer to the iET CMDB solution datasheet on our website.



Functionality of iET Inventory Center and iET CMDB Intelligence



# iET® Inventory Center

## Agentless Inventory of your IT Assets

### Solutions for Asset Management and Configuration Management / CMS

#### Asset Management

iET Inventory Center collects all of your hardware and software assets and also provides license management features. iET Inventory Center is equipped with a Windows and a web client, and can be implemented as a stand-alone solution, independent from other iET Solutions products. iET Inventory Center gathers all data required for comprehensive asset management and provides all required queries and views.

#### Asset Management plus Configuration Management Database

If you want to establish a configuration management database (CMDB) in addition to asset management, we suggest the integration of iET CMDB Intelligence. Using filters, this solution allows you to limit the data import to relevant data required for the CMDB. With the automated variance comparison between actual IT infrastructure and CMDB, iET CMDB Intelligence immediately shows the differences.

#### ABOUT iET SOLUTIONS

iET Solutions, a division of UNICOM® Global, helps large and midsize enterprises to increase the efficiency and security of their IT operations and infrastructure. Organizations around the world use software from iET Solutions for IT service management (ITSM), software asset management (SAM) and enterprise service management (ESM). The company has more than three decades of experience in service management and works with organizations across all industry sectors.

#### Locations

##### Worldwide Headquarters

iET Solutions, LLC.  
UNICOM Global HQ  
UNICOM Plaza Suite 310  
15535 San Fernando Mission Blvd.  
Mission Hills, CA 91345, United States

Phone: +1 818 838 0606  
info@unicomglobal.com  
www.unicomglobal.com

##### European Headquarters

iET Solutions GmbH  
Humboldtstr. 10  
85609 Aschheim, Deutschland

Phone: +49 89 74 85 89 0  
info@iet-solutions.de  
www.iet-solutions.de

##### UK Headquarters

iET Solutions  
Macro 4 Limited  
The Orangery  
Turners Hill Road  
Worth, Crawley  
West Sussex RH10 4SS, United Kingdom

Phone: +44 12 93 87 23 00  
info@iet-solutions.co.uk  
www.iet-solutions.co.uk